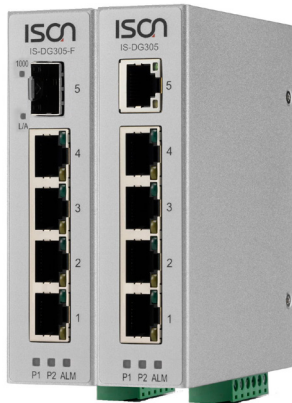
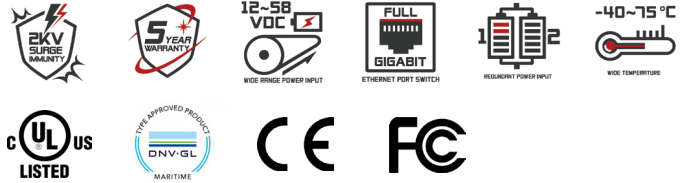


IS-DG305 Series

5-port Gigabit Unmanaged Layer 2 Industrial Ethernet Switch



The IS-DG305 Series are full Gigabit unmanaged Ethernet Switches that provide easy to access, plug-n-play Gigabit ports for applications; a full Gigabit network provides higher throughput than legacy Fast Ethernet network. The cost effective IS-DG305 Series unmanaged switches can be easily used in factory production line or embedded into machine system. The IS-DG305 Series also support some useful function by default for network traffic optimization, such as QoS and storm protection.



Key features

- ▶ 5 / 4 Giga Copper ports with 0 / 1 100 / 1000 Based SFP (SX/LX/LHX) ports
- ▶ Support 9K Jumbo frames
- ▶ IEEE 802.3x flow control & back-pressure
- ▶ Layer 2 Line-Speed Switching Fabric, non-blocking
- ▶ Support IEEE 802.1p TOS/Diffserv, QoS by default
- ▶ Multicast / Broadcast / Flooding Storm Control
- ▶ Wide-temperature range (-40~75°C)
- ▶ Redundant power input (12~58 VDC)
- ▶ Reverse power protection
- ▶ DIN-Rail or wall mount installation
- ▶ Support Relay Output Alarm
- ▶ IP 30 Protection
- ▶ 2KV surge immunity on RJ45 Copper ports
- ▶ 1.5KV Hipot
- ▶ Rugged Fanless design

Specification

Ethernet

Operating Mode	Store and Forward, L2 wire-speed/non-blocking switching engine
MAC addresses	2K
Packet Buffer	1 Mbits
Jumbo frame	9K
Backplane / Switching Fabric	10Gbps

RJ45 Copper ports

Speed	10/100/1000 Mbps
MDI/MDIX Auto-crossover	Support straight or cross wired cables
Auto-negotiation/Duplex	10/100/1000 Mbps speed auto-negotiation; Full & Half Duplex
Ethernet Port Protection	1.5KV VRMS 1minute(Hipot), 2KV surge immunity on RJ45 Copper ports

Fiber Ports

Port Types supported	100/1000 Base SFP Slot
Fiber port connector	LC/RJ45 connector for fiber ports
Optimal fiber cable	Typical 50 or 62.5/125 μ m for multimode (mm) Typical 8 or 9/125 μ m for single mode (sm)

Protocols & Standards

IEEE 802.3 , IEEE 802.3x, Flow Control, Back Pressure, TCP/UDP
--

Smart Features

QoS	IEEE 802.1p, TOS/Diffserv
Number of Queue	4
Storm Protection	Multicast/Broadcast/Flooding Storm Control
Traffic Shaper	Port-Based Port Sharping

Power

Power Input	Redundant Power Input, DC Input, Terminal Block
Input Voltage Range	12-58 VDC
Reverse power protection	YES
Power Consumption	IS-DG305 3.6 Watt, IS-DG305-F 4.3 Watt

Indicators

Power status indication	Power Input status
Ethernet port indication	Link & speed

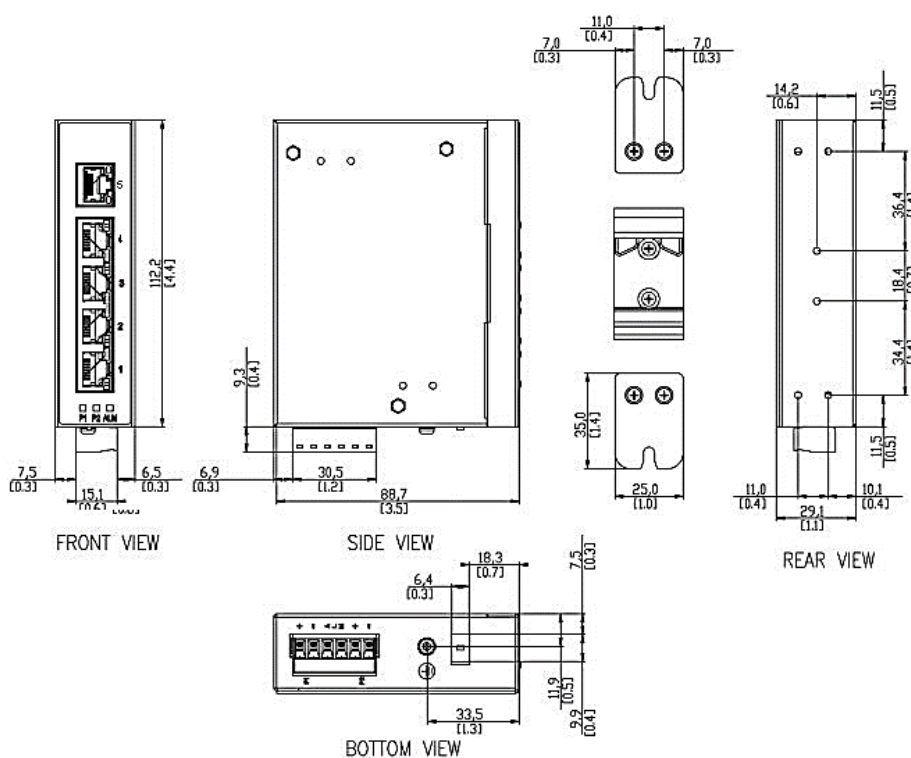
Environmental and Compliances

Operating Temperature	-40~75°C (Cold startup at -40°C)
Storage Temperature	-40~85°C
Humidity	5~95% (Non-Condensing)
Vibration, shock, free fall	IEC-60068-2-6, -27, -32
Certification Compliance	CE, FCC
Electrical safety	CE, UL 60950-1, CSA C22.2 No. 60950-1, EN 60950-1
Marine	DNV, GL
EMC	FCC Part 15, CISPR 22 (EN55022) Class A IEC-61000-4-2, -3, -4, -5, -6 (Level 3)
RoHS & WEEE	RoHS (Pb free) and WEEE Compliant
MTBF	>25 years

Mechanical

Protection	IP30
Dimension	109.2mm(H) x 29.1mm (W) x 89.4mm (D) (without DIN rail kit)
Weight	350 g
Installation	DIN-Rail mounting; Wall mounting
Relay Output	1A, 24V, Normal Open

Dimension Diagram



Ordering Information

Available Models	Description	10/100/1000Mb TX	100/1000Mb FX
IS-DG305-F	Industrial 5 port Gigabit Layer 2 unmanaged Ethernet Switch, 1G SFP Slot	4	1
IS-DG305	Industrial 5 port Gigabit Layer 2 unmanaged Ethernet Switch	5	

Accessories

1. 100 Mb SFP Modules
2. Gigabit SFP Modules
3. IS-RK2U 19" rack mount kit
4. IS-RK4U 19" rack mount kit
5. IS-PS20-12 Power adaptor

Package Checklist

- IS-DG305 Switch
- Quick Installation Guide (Printed)
- Wall Mount kit / DIN-Rail kit